



Drywall Taping Made Easy featuring the TapeBuddy® Drywall Taping Tool

By: Ron Morton

BUDDY TOOLS LLC®

PO Box 55, Sulphur Springs OH 44881

Office: 419-617-4611 Fax: 419-617-0092

www.BuddyToolsLLC.com

BuddyTools@BuddyToolsLLC.com

"TapeBuddy is one fantastic tool. It took me about 10 hours to completely tape a 1200 square foot house from start to finish and included cleanup. I would highly recommend this tool to everyone. "

~ Testimonial: Mike, Kansas City, Kansas

TapeBuddy tools make taping drywall Easy!



“NEARLY EVERY HOUSE
CONSTRUCTED OR
RENOVATED IN THE
PAST 40 YEARS HAS
INCORPORATED
GYPSUM BOARD.”

WWW.DRYWALLFACTS.COM

“Drywall is one of the most forgiving building materials in
the construction industry yet
taping drywall is one of the most dreaded
and feared tasks.”

Taping Drywall is Easy with the Right Tools.

So do it right the first time
and not over!

**CHECK OUT MORE RIGHT TOOLS
BY BUDDY TOOLS LLC BELOW.**

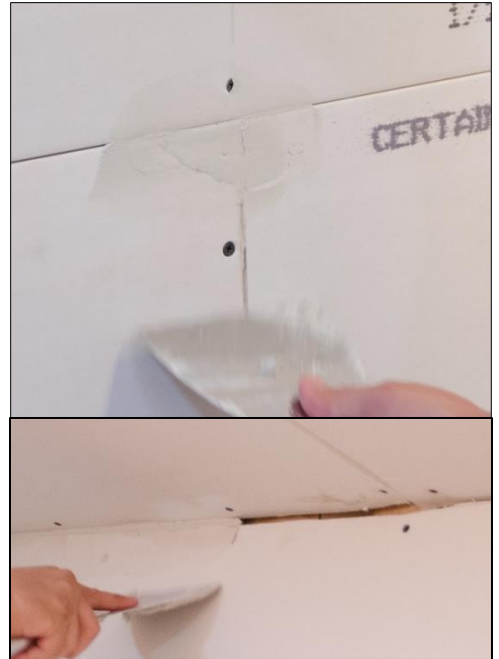
“Happy is the man who finds wisdom,
And the man who gains understanding.” Proverbs 3:13

BUDDY TOOLS LLC®



Before taping...

- ▶ **Check all drywall sheets** to make sure they are properly attached and that all the fasteners are below the surface.
- ▶ **Make sure floors** are free of all debris and clean.
- ▶ **Gaps over 3/16" or break outs** should be pre-filled with setting-type joint compound (mud) for less shrinkage. Make sure this compound does not come above the drywall surface.
- ▶ **Suggested order** for applying drywall tape to the seams: edge seams, butt joints then inside ceiling and wall corners.



BUDDY TOOLS LLC®

"The fear of the LORD is the beginning of wisdom; A good understanding have all those who do His commandments. His praise endures forever."
Psalm 111:10

**TAPEBUDDY
HELPS YOU ACHIEVE
A PROFESSIONAL
LOOK ON A DIY BUDGET!**



Types of drywall tape

▶ Paper: Applies with TapeBuddy tools

- Strongest seaming product
- Least expensive
- Flatter finished surface when applied correctly.
- Embedding pushes compound between sheets for better strength and reduced movement.
- Super Easy to apply with TapeBuddy® tools



\$2.50 / 250'

▶ FibaFuse®: Applies with TapeBuddy tools

- Fiberglass tape (not mesh tape)
- Drywall mud goes completely through tape
- Needs more build up to cover tape
- Higher material cost per foot than paper
- Sanding exposes glass tape fibers
- Fibers can enter skin



\$7 / 250'

▶ Mesh:

- Mesh is applied over seams before mud
- Must use setting type compounds
- Mesh is not recommended for use in corners
- Needs more compound build up
- Cracks are visible through mesh tape
- Sanding can expose tape fibers
- More expensive per foot than paper



\$7 / 300'

**TAPEBUDDY® GIVES YOU A SMOOTH
EVEN TAPE APPLICATION
FOR A PERFECT SEAM.
BUDDY TOOLS LLC®**

"Wisdom abides in the mind
of a man of understanding."
Proverbs 14:33



Recommended Tools for taping



These mixers
need a large
slow drill



MixIt tools work
with cordless drill



12" mud pan serves for
the entire finishing task

5" joint knives
work really well
for taping.



Bucket lid
remover



Something to
stand on

Mark N Guard



And your own TapeBuddy® tool



Cleaning brush



Bucket Scoop



TAPING DRYWALL IS SUPER EASY WITH THE RIGHT TOOLS.

BUDDY TOOLS LLC®

"A wise man will hear and increase learning, and a man of understanding will attain wise counsel." Proverbs 1:5



TapeBuddy® tools eliminate tape blisters

- ▶ **Why do blisters appear under the tape?**
 - Blisters or bubbles are caused when tape is embedded onto seams that don't have enough compound or has compound with low moisture.
 - Applying dry tape over compound without the correct moisture creates long term problems. Tape will blister or not adhere correctly, and long term may begin to curl up on the edges. This could take a few years to show.
 - **Why does this happen?** When applying compound first to the seam the drywall pulls the moisture from the compound and the air dries the surface. When the tape is finally embedded, the compound is too dry to adhere to the tape.
- ▶ **Does wetting the paper first help?**
 - No. This actually causes the paper to not adhere properly. Why? The water on the tape isolates the paper from the "glue" in the compound.
- ▶ **What is the key to having paper stick?**
 - The compound must have the correct amount of moisture for the paper to adhere properly.

Solution for a "No Blister Seam"

Applying the prepared compound directly to the tape and the tape to the seam is the key! You can see the tape is coated correctly without dry spots. The tape will have the moisture it needs to stick forever without blisters.



**APPLIES MORE COMPOUND
TO THE TAPE CENTER!!!
BUDDY TOOLS LLC®**

"Happy is the man who finds wisdom and the man who gains understanding." Proverbs 3:13



Taping with a TapeBuddy tool:

Step 1: Tools Setup

- ▶ Remove bridge insert from the front of the tool by clipping the tabs. Smooth any rough edges.
 - Reversing this insert allows for 2 controlled mud thicknesses applied to the tape.Determine what mud thickness you need.
- ▶ Insert the bridge into the slides wording down, align and snap into place.

Step 2: Loading the tool

- ▶ Feed drywall tape from the tape holder compartment into the mud compartment center crease up and out through the mudded tape gate.
- ▶ You can use either 250' or 500' rolls of paper tape.

Step 3: Prepare the "All Purpose Compound"

- ▶ Use **only** "All Purpose Joint Compound" for applying paper drywall tape to joints. This compound has the necessary glue for the paper to sick and dries very hard. See page 14
- ▶ Premix All Purpose Compound by adding approximately one to two cups of water for each gallon of compound to form a creamy consistency. Mix well.
- ▶ With the drywall tape already passed through the mud compartment, fill the compartment with the mixed compound.



"The LORD by
wisdom founded
the earth;
By understanding
He established
the heavens."
Proverbs 3:19

**LESS WASTED COMPOUND,
LESS MESS & LESS SANDING!**

BUDDY TOOLS LLC®



Taping with a TapeBuddy tool:

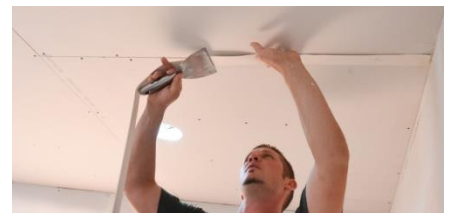
Step 4: Pulling coated tape

- ▶ With one hand on the tool, pull the tape straight out with the other hand to the desired length needed and hold upwards.
- ▶ Cut the mudded tape by inserting the drywall joint knife corner into the center of the tape about one inch from the end of the out-feed table.
- ▶ Make sure you leave enough tape for pulling the next piece.



Step 5: Applying the tape

- ▶ Apply tape to the joint with the mudded side towards the drywall.
- ▶ Use a 5 to 6 inch joint knife to firmly embed the tape into the seam.
- ▶ Be careful to not squeeze out too much mud.
- ▶ Smooth the tape area and let it dry. Continue with topcoats until finished.
- ▶ Clean-up tools with a brush and water then wipe dry.



"Wisdom abides in
the mind of a man
of understanding."
Proverbs 14:33

EASY CLEAN-UP

BUDDY TOOLS LLC®



What about...?

How do I know which end of the insert to use?

- ▶ Each end of the insert has a different thickness. By reversing this insert, you can change the amount of mud being applied to the tape.



Should I use pre-mixed or setting type compound to tape drywall?

- ▶ Pre-mixed all-purpose compound naturally dries and shrinks or draws the embedded tape flatter to the surface.
- ▶ Setting type compounds don't shrink and keep your tape farther from the drywall surface.
- ▶ We only recommend using setting type compounds when you need to hurry the process.



How much tape should I pull out at a time?

- ▶ Estimate the length of tape needed then pull out that approximate length. Around five' or your arms span is the easiest to work with.
- ▶ Cut the coated tape, place the mudded side on the seam and embed.
- ▶ Position one end of the tape and embed it with your joint knife continuing to the end. Position your joint knife where you want the tape to stop and tear off the excess tape. The next piece can be butted end to end or overlapped.



BUDDY TOOLS LLC®

"So teach us to
number our days,
That we may gain a
heart of wisdom."
Psalm 90:12

**CHOICE OF TWO CONTROLLED
COMPOUND THICKNESSES**

www.BuddyToolsLLC.com

BuddyTools@BuddyToolsLLC.com



Taping edge seams

- ▶ Drywall is beveled on the edge making this seam the easiest seam to tape.
- ▶ Work with the longest length you can handle easily which is usually about 5 feet.
- ▶ Use a flexible joint knife to embed the tape tight into the beveled surface.
- ▶ If you prefer you can pull enough coated tape for the entire seam by booking the coated tape as you pull it out. Apply the tape on the whole length. Embed the tape starting at the middle and working in both directions. Drywall tape stretches when it is moist. Starting in the middle will allow the tape to move towards each end without any problem. You may need to trim the extra tape at the end.
- ▶ Ceiling joints are easiest taped with 5' to 6' pieces. When working off of a bench or ladder, you can only embed what you can reach so there is no need to pull out more coated tape than you can embed from this position.



Booking the tape for longer pieces

TapeBuddy makes it easy to tape ceiling joints! Position your bench under the seam you are working on, pull out the coated tape (about 4 to 6 feet) and step onto your bench. Press one end of the tape over the seam and align the other end. Because the mud is on the tape, it will stick instantly. Embed, smooth and you're ready for the next piece. There's no mess or excess compound! See page 13 for more advice on taping butt joints.

"The fear of the LORD is the beginning of wisdom,
And the knowledge of the Holy One is understanding."
Proverbs 9:10

**TAPEBUDDY USES INDUSTRY
STANDARD TAPE**
BUDDY TOOLS LLC®



Taping vertical inside corners

- ▶ Pull about a 5' length of tape, cut, place and embed starting at the top corner. There is no need to pre-crease the tape as moist tape folds very easily when tucked into position.
- ▶ Estimate the length of tape to finish the bottom part of the seam, cut and place the tape starting at the floor. Smooth the tape and you are done.
- ▶ The tape shouldn't touch the floor. There is no excess compound behind the tape to ooze out so the corner embeds correctly and stays clean.
- ▶ Longer pieces of tape can be pulled from the tool by booking the tape as shown in the picture below.

Start at the top corner with along piece and embed



Then finish the bottom half of the seam



Booking the tape for longer pieces



Cut the tape by using your joint knife or just overlap.

"But let every man prove his own work, and then shall he have rejoicing in himself alone, and not in another."
Galatians 6:4

**TAPEBUDDY MAKES
TAPING CORNERS EASY!**
BUDDY TOOLS LLC®



Taping horizontal inside corners

- ▶ Start at the corner with a 5' length of tape and tuck into place. Embed one side at a time working in the direction you are most comfortable. Direction will depend on which hand you use for the joint knife.
- ▶ Continue to use 5' pieces of tape (or as much as you can handle easily) as you move across the seam to the end. These can be butted or overlapped in the corners. Smooth the tape and you are done.
- ▶ Longer pieces can be used but unless you are on a walking plank, you'll find it harder to work with. Tape splices do not affect the taping seam strength.



Flat or Corner Joint Knife?

The finished taped corner should have a sharp corner, so we suggest you embed corners with a flat joint knife. Corner trowels can be used for the second coat.

"There are no secrets to success. It is the result of preparation, hard work and learning from failure."
Colin Powell

TAPEBUDDY WORKS
ON ALL SEAMS!
BUDDY TOOLS LLC®



Taping butt joints

- ▶ **For bottom seams:** Lay the coated tape over the center of the seam starting at the floor and embed up. Embed from the bottom pulling your joint knife to the top. At the top place your joint knife 1" below the horizontal seam, hold the taping knife firm and tear off the extra tape. Finish embedding the tape.
- ▶ **For top seams:** Lay the coated tape over the center of the seam starting at the top to the bottom. Embed from the top down. Firmly hold your taping knife 1" above the horizontal seam and tear the extra tape off. Finishing embedding the tape.
- ▶ **For ceiling seams:** Butt joints require 46" of tape. (allowing 1" in from both ends) Don't measure the tape. Simply pull out a little over 4' of coated tape and position it 1" in from the edge seam and lay the tape over the center of the seam. Embed starting from positioned end to the other. Hold your taping knife firmly 1" from the other edge seam, tear off the extra tape and finish embedding. **You're done!**
- ▶ **Do not overlap tape on surface seams!** This will increase your surface depth for finishing.



Ceiling seams are easy to tape with a TapeBuddy tool!

**NO NEED TO
PRE-COAT SEAMS**

www.BuddyToolsLLC.com

BuddyTools@BuddyToolsLLC.com

BUDDY TOOLS LLC®

"Focused, hard work is the real key to success. Keep your eyes on the goal, and just keep taking the next step towards completing it. If you aren't sure which way to do something, do it both ways and see which works better." John Carmack



Drywall Taping Tricks of the trade

Finishing outside corners

- ▶ Plastic outside corners work very well and can be purchased most wherever drywall supplies are sold. Metal corners are tough but tend to rust, especially when used in high moisture areas like bathrooms, basements or under wallpaper coverings. Plastic corners can be stapled or fastened on the corner using setting compounds. They are easy to apply, give you a nice corner for the finished product and will never rust. You can run a piece of drywall tape over the edge of the corner bead for a stronger grip but make sure it stays below the surface of your finished wall.

Compound glues the drywall sheets together

- ▶ The pressure of embedding fresh coated tape forces the moist compound deep into the joint gluing the drywall edges together for excellent strength. Using mesh doesn't allow the compound to push through the mess as well since the compound used to cover the mesh is much stiffer.

Applying compound over the tape coat

- ▶ The tape will dry much quicker than conventional taping methods because only the compound on the back of the tape is on the wall. Let the tape dry before applying more mud or the second coat. If you top coat the tape before it's dry, the moisture from the new compound can go through the tape and release the glue from the bottom of the tape causing the tape to loosen its grip.

Important!

Pre-mixed vs. setting type compound to tape drywall



Pre-mixed all-purpose compound dries naturally and shrinks drawing the embedded tape flatter to the joint. This means less needed build up on the finish coat. One of the advantages of setting type compounds is that they don't shrink as they dry. When applying tape with setting compound it sets up and keeps your tape farther from the drywall surface. We only recommend using setting type compounds when you need to hurry the process.



**TAPEBUDDY HELPS YOU ACHIEVE
A PROFESSIONAL
LOOK ON A DIY BUDGET!**

www.BuddyToolsLLC.com BuddyTools@BuddyToolsLLC.com



Drywall Taping Tricks of the trade

Preparing the drywall compound to the correct consistency

- ▶ Add approximately one to two cups of water per gallon of all purpose pre-mixed mud and mix well. This creamy mixture has the proper consistency for the tape to stick to the drywall. If the mud is too thick or dry, it will be hard to squeeze out from behind the tape making it difficult to embed correctly. If the mud is too thin, it will squeeze out too easily and may run off the side of the trowel.
- ▶ Remember, you can always add more water to the compound. If you are using a new bucket of mud, try adding 1 or 2 cups of water and mixing just the top portion of the bucket. As the mud is used, you can add more water and mix the remaining compound.
- ▶ You can always add more water but you can't take it away.

Here are some more "tricks of the trade" that will help you

- ▶ Some new drywall knives or trowels may have a burr on the edge. This edge tends to pull the mud rather than smooth it out correctly. Remove the burr with a file or sandpaper before starting. Make sure the corners are not bent.
- ▶ TapeBuddy tools work great for taping around shower fixtures, windows, doors, or anywhere you need to straighten out a rough edge.
- ▶ If the mud compartment is full of mud and you notice that the tape roll is about to run out, you'll need to empty the mud compartment to feed the new roll of tape or try this: Tape the new roll of tape to the end of the other roll and pull it through.
- ▶ The compound surface will dry out over night even in a sealed bucket. To help prevent this, clean the sides of the bucket well with a brush or trowel on the mud before sealing with the lid.
- ▶ You can decrease the compound applied on the tape even more by applying a layer of duct tape over the insert decreasing the mud gap.
- ▶ 500' rolls of tape are heavier and harder to pull. Place a 6" piece of 2" PVC through the tape roll for a smoother ride.



Exodus 35:35 "He has filled them with skill to do every sort of work done by an engraver or by a designer or by an embroiderer in blue and purple and scarlet yarns and fine twined linen, or by a weaver, by any sort of workman or skilled designer."

**NO HEAVY
EQUIPMENT
TO WORK WITH**



Drywall Taping Tricks of the trade

Taping drywall ceilings on **HOT** summer days

- ▶ Taping ceilings in new construction can be a challenge when the air and drywall are hot. Attics don't usually have the insulation in before taping the drywall and the attic temperatures can reach 140 degrees making the drywall surface hot. Applying compound and tape the conventional way will be extremely hard as the compound will dry quickly. The mud applied to the hot drywall surface begins to dry out immediately as it sucks the moisture from the mud. The warm hot air dries the compound surface and by the time the tape is placed, there isn't enough moisture for the tape to adhere. The KEY to a good tape seam is using a TapeBuddy tool. It applies the compound directly to the tape first allowing the tape to have the moisture it needs. The compound still has plenty of moisture to adhere the tape to the drywall. Be assured, the taped seam will dry fast but will never come off. Perfect seams every time with no mess! Just what you need on a hot day beside something cold to drink.



Bucket

- ▶ Keeping the bucket sides clean is important to not having dry chunks in the mud. Use water and a brush or your hand to wipe down the sides of the bucket to the mud surface. The extra water will help keep the surface from drying out. You can stir the extra water on later.
- ▶ Try one of our new **Scoop-N-Scrape** bucket tools to keep your bucket clean as you scoop the mud. It's made of rugged nylon and will never break or rust. It doesn't scratch the sides of the bucket like the metal scoops that tend to leave plastic shavings in the mud. It's designed to fit the bucket curve.



Ec 3:12-13 "I know that nothing is better for them than to rejoice, and to do good in their lives, and also that every man should eat and drink and enjoy the good of all his labor—it is the gift of God."

THE RIGHT TOOLS MAKE THE WORK EASY

www.BuddyToolsLLC.com

BuddyTools@BuddyToolsLLC.com

Look what **YOU** get with **TapeBuddy® Tools**



Features:

- ▶ One step drywall tape and joint compound application
- ▶ Choice of two controlled compound thicknesses
- ▶ Smooth even coat of compound applied to tape
- ▶ Uses industry standard paper or FibaFuse® tape.
- ▶ Applies more compound to the tape center
- ▶ Made of HDPE heavy duty plastic that will never rust
- ▶ Made to sit on a 5 gallon bucket
- ▶ Made in USA!



Benefits:

- ▶ Less wasted compound with less mess
- ▶ Can be used by more than one person
- ▶ Ceilings and corners are easy to tape
- ▶ Less frustration with more productivity
- ▶ Virtually no blisters or bubbles in the finished product
- ▶ Makes the project look good
- ▶ Feeling of accomplishment
- ▶ Cleans easily with water and brush
- ▶ The Perfect DIY Drywall Taping Tool for anyone



As Seen On



Tool instruction and drywall taping videos:

- ▶ Detailed printed instructions on easily taping drywall are included with every tool
- ▶ Video instructions on tool use found at www.TapeBuddy.net website and YouTube



**HELPS YOU ACHIEVE A PROFESSIONAL
LOOK ON A DIY BUDGET!**

"If you are looking at this product then just buy it. You will not be disappointed. Drywall taping has never been so easy." Amazon customer review



Tool Features:

- One piece HD nylon that won't break or ever rust
- Curved front edge fits the bucket radius
- Beveled edges for a cleaner bucket wall
- Open handle for less material and easy wall storage hanger
- Rounded handle for comfortable fit

"This is yet another great product from Buddy Tools. I use this product all the time without fail. You will never leave a drop of compound in the bucket again. The size and the angle of the front curve makes it a perfect fit in a 5 gallon pail. Cleaning is a breeze."

Vincent

Property Manager in NYC



Tool Benefits:

- Does not gouge the bucket sides like metal scoops
- Nylon is sturdy yet pliable conforming to the curve of the bucket
- Cleans bucket sides as it scoops material
- Material doesn't fall off the end of the scoop
- Angled side edges scrape the sides as you stir the material
- Usable on drywall compound, paint, asphalt driveway sealer, roof coating, carpet glue, tile adhesive and anything that comes in a 2 to 5 gallon bucket!

"It's about time someone made a scoop that works."

Sherwin Williams Store Manager

BUDDY TOOLS LLC®

PO Box 55
Sulphur Springs OH 44881
Office: 419-617-4611

www.BuddyToolsLLC.com BuddyTools@BuddyToolsLLC.com



Tool Features:

- 20" overall length
- 4-way ABS **non-porous** elliptical mixing blades
- HD 3/8" plated hex steel shaft
- ABS blades are molded to the center shaft for maximum working power

Tool Benefits:

- Tool is designed with an ABS smooth, non-porous surface so material doesn't stick making for super easy cleaning
- Works with most cordless drills (unlike most mixers needing a HD 1/2" drill)
- Does not gouge the bucket sides like metal mixers
- 4-way ABS elliptical mixing blades stir material up or down with drill rotation.
- 20" overall length allows for easy storage
- Usable on drywall compound, paint, epoxy coatings and more. Fits into most one gallon paint cans.

Voted #1 mixer by
Statguard Flooring

BUDDY TOOLS LLC®

PO Box 55
Sulphur Springs OH 44881
Office: 419-617-4611



Project Benefits: speed and less errors

The **Mark-N-Guard**® tool is a perfect solution as an electrical box locator. Just push the Mark-N-Guard insert into the outlet box and hang the drywall tacking it in place. The tip of the Mark-N-Guard will penetrate the drywall making the box center easily visible on the surface without measuring. Cutting around the box is a snap.



Boxes located at the edge or end of a sheet can be easily seen. Avoid using Mark-N-Guard tools close to the end of a sheet as the drywall may crack.

Tool Benefits for you:

- The **Mark-N-Guard** locates and marks the box center without the need to measure eliminating wrong cut out repairs
- Works on single gang boxes for locating the box. Works best on ½" drywall.
- Can be trimmed to length to fit your boxes
- The Mark-N-**Guard** inserted into the electrical box protects the electrical or internet wires from being damaged while cutting the drywall eliminating wire repairs.
- Tool is made with a super tough ABS material
- Tools nest for each storage

How To Steps for use:

1. Place a Mark-N-Guard in ever box (you will need one for each box behind the sheet)
2. Tack the drywall into place
3. Apply slight pressure to the box areas. The point of the Mark-N-Guard will pop through the drywall surface. The center of the electrical box is now marked.
4. Insert the tip of the router bit next to the tip of the Mark-N-Guard. Move the router until you feel the perimeter of the box. Pull the router back far enough to get past the box then using the box as a guide cut on the outside of the box.
5. Remove the drywall plug and Mark-N-Guard. You are ready to hang the next sheet!

BUDDY TOOLS LLC®

PO Box 55, Sulphur Springs OH 44881

Office: 419-617-4611 Fax: 419-617-0092

www.BuddyToolsLLC.com

BuddyTools@BuddyToolsLLC.com

It is truly a **Mark-N-Guard**
at an affordable price



Testimonials



Drywall Taping Tool

Durable!

"The best feature is the ease of mud application and simple cleanup. It's plastic but very durable."



Yes, I recommend this product



Drywall Taping Tool

Absolutely a must have

"This tool is a must have for anyone installing drywall in the future. Absolutely a must have. Saves tons of time and energy."



Yes, I recommend this product



Drywall Taping Tool

So Much Easier

"Using this made the taping process so much easier. It was quicker and plus the clean up was a lot easier too! I highly recommend this product for anyone doing a home drywall job."



Yes, I recommend this product



Drywall Taping Tool

Title describes the product to a "T"

"The TapeBuddy saved me time and money by doing the drywall myself. I haven't done much drywall but it looks like a professional did the job instead of me"



Yes, I recommend this product



Drywall Taping Tool

Right amount of mud

"I really like this product because it applies the right amount of mud to the tape."



Yes, I recommend this product



Drywall Taping Tool

Totally Tape "Buddy"

The TapeBuddy is great! The ease of use complimented with the great design makes this product a well bought product. Enjoy the hassle-free "auto-mud" feature that makes this a true one-of-a-kind product.



Yes, I recommend this product



Drywall Taping Tool

More productivity with less frustration

"More productivity with less frustration with virtually no blister or bubbles in the finished product. Cleans up easily with water and scrub brush and also makes the project look good."



Yes, I recommend this product



Drywall Taping Tool

Great Product

"This product was easy to use, and makes doing touch up drywall jobs quicker and less messy. I can now patch a wall in half the time it used to take me because I don't have to put down the putty then pick up the drywall tape and vice versa."



Yes, I recommend this product



Testimonials



Drywall Taping Tool

Perfect Tool

"TapeBuddy is the **perfect tool** for the homeowner looking to handle a drywall tape and mud job with ease."



Yes, I recommend this product



Drywall Taping Tool

"This is a great tool for the work I do. It is very handy, does the job as needed without waste of material and is light weight. The TapeBuddy is easy to set up and when used properly, it will save money; in an aspect,

it will pay for it's self."



Yes, I recommend this product



Drywall Taping Tool

"The TapeBuddy is a labor saving drywall tape dispenser. It applies just the right amount of paste to the tape for a continuous void free application of the tape. Voids and poor coating under the tape can create bubbles in the tape. When painting, the bubbles stand out. It is a great tool. It helps **alleviate the problem of the bubbles** in the taping process."



Yes, I recommend this product



Drywall Taping Tool

Any skill level

"This is a great product for taping drywall. It makes the job clean and quick. It is easy for anyone to use with any skill level. I would definitely recommend this product."



Yes, I recommend this product



Drywall Taping Tool

Highly Recommend

"I highly recommend this product. It was very easy to use."



Yes, I recommend this product



Drywall Taping Tool

"The TapeBuddy made taping drywall joints very fast and easy. And the quality of the joints was great! I taped an entire wall in the time it took me to tape one joint using conventional methods. **Taping corners were easy, too."**



Yes, I recommend this product



Drywall Taping Tool

Well built

"Virtually indestructible. Simple design. No moving parts."



Yes, I recommend this product



Drywall Taping Tool

How did TapeBuddy tools help you with your project?



Yes, I recommend this product